



## Bowes Road, W3

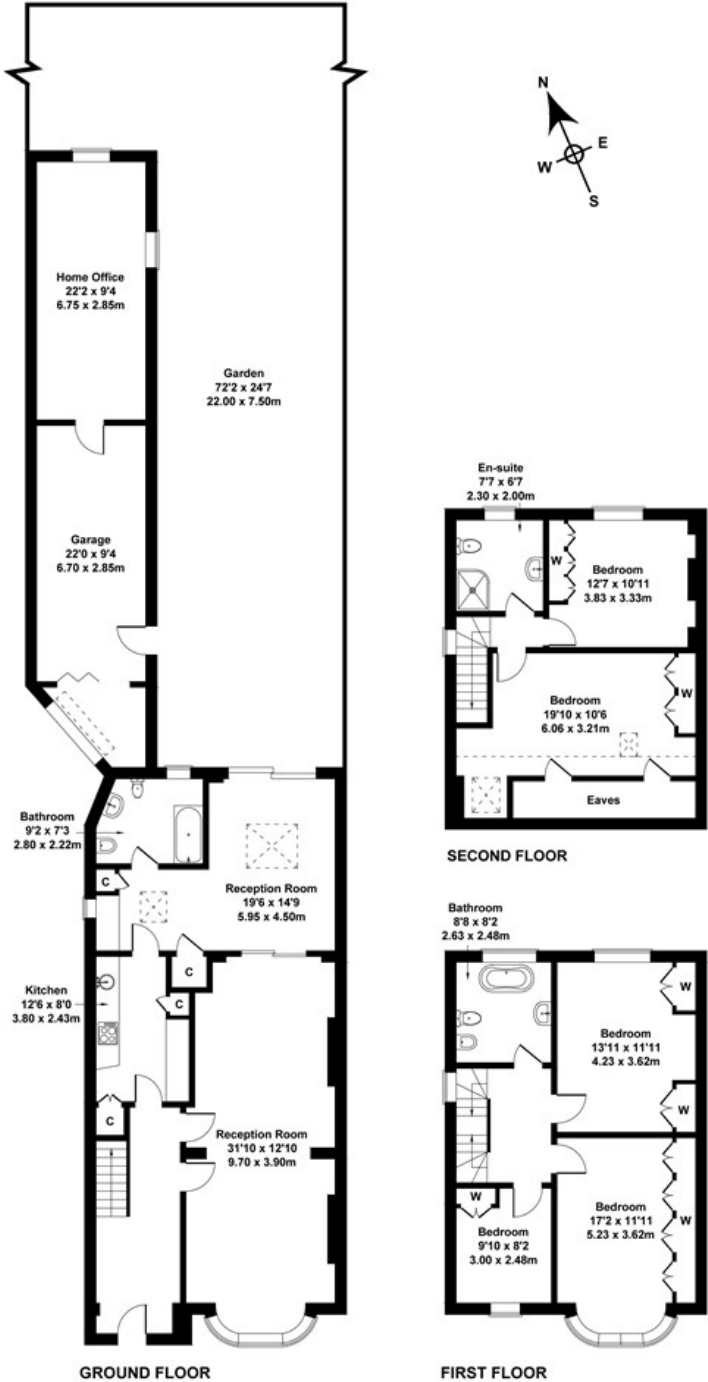
LONG LET. Located on a quiet street, this well presented five bedroom family house is arranged over three floors and features a lovely well maintained garden and boasts a stunning modern interior.

- FIVE BEDROOM HOUSE
- AVAILABLE NOW
- THREE BATHROOMS
- OFF ROAD PARKING
- MODERN INTERIOR
- CLOSE TO LOCAL TRANSPORT

£4,697 PCM

# Bowes Rd

Approximate Gross Internal Area  
2508 sq ft - 233 sq m



Not to Scale. Produced by The Plan Portal 2023  
For Illustrative Purposes Only.

Energy Efficiency Rating		
	Current	Potential
Very energy efficient - lower running costs		
(92 plus) A		
(81-91) B		
(69-80) C		
(55-68) D		
(39-54) E		
(21-38) F		
(1-20) G		
Not energy efficient - higher running costs		
England & Wales	EU Directive 2002/91/EC	